



Embedding Sustainability in Wales's Sole Dental Hospital and School

Crafting the Narrative for Change

Sheelagh Rogers
Consultant, University
Dental Hospital

Nagham Katif
Lecturer, School
of Dentistry

Why Sustainability in Dentistry?



NHS Dentistry makes up 3% of the NHS carbon footprint = 675,706 tonnes CO₂



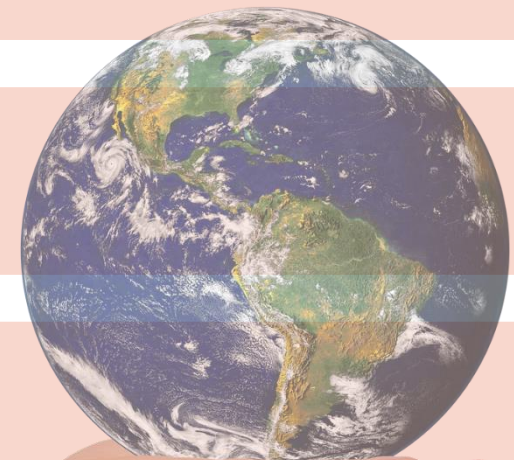
Climate crisis urgency
Welsh Government Net Zero Wales targets



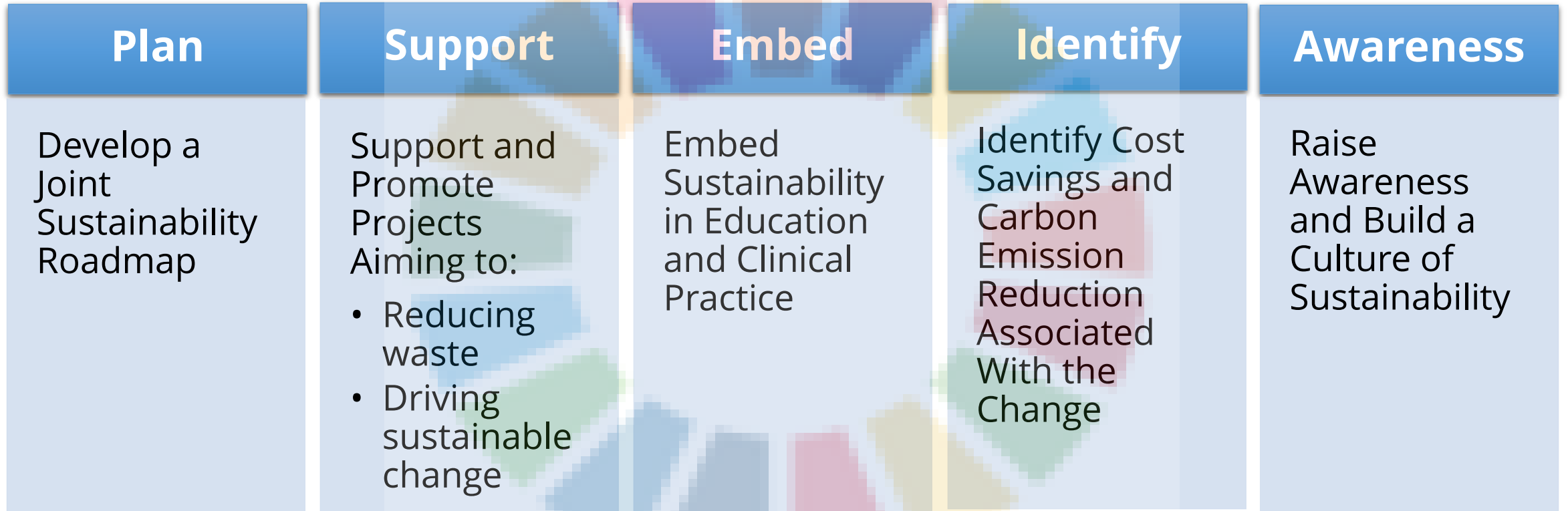
Unique position: Wales's only Dental Hospital and School



Opportunity: Integrate sustainability into education and clinical practice



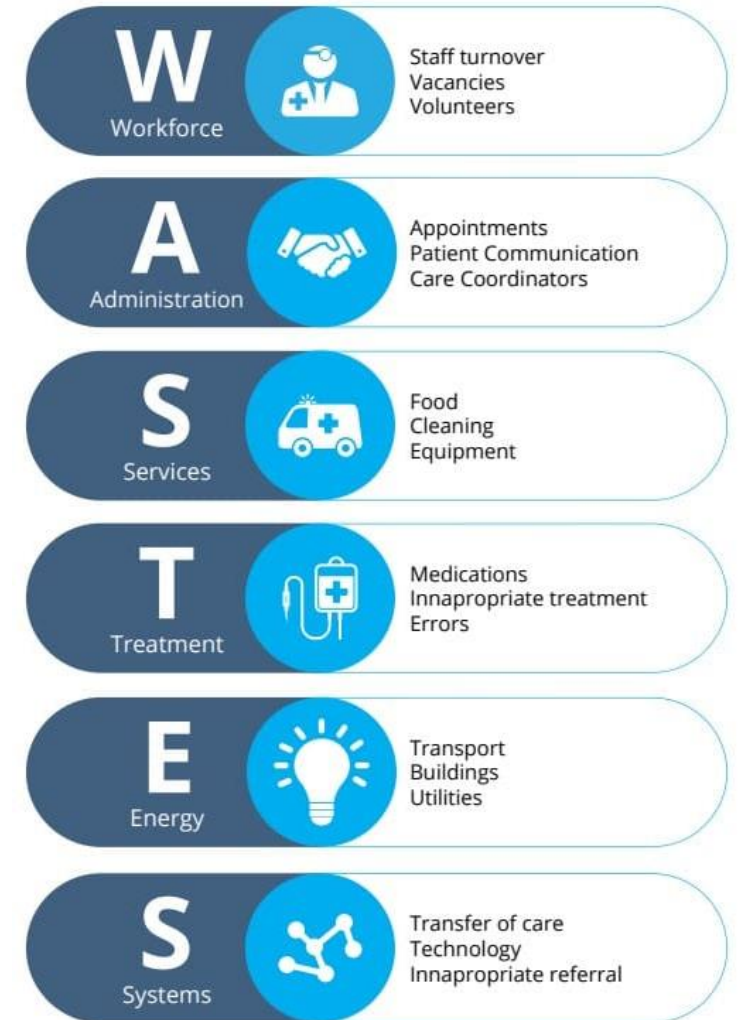
Aims & Objectives



<https://www.un.org/sustainabledevelopment>

Approach

- Appointed Sustainability Leads
- Mapped inefficiencies
 - Bevan Commission's WASTES typology framework
- Launched projects:
 - Quality Improvement Projects
 - Service evaluations
 - Curriculum integration
- Stakeholder engagement
 - Sustainability In Dentistry (SID) Talks



Key Projects

Dental Theatre Workforce:

Upskilled nurses →
fewer cancellations

Decontamination Protocol:

Removed **paper
wrapping** → cost & CO₂
savings

Nitrous Oxide Decommissioning:

Aim to reduce
greenhouse gas
emissions

Recycling

Single Use Plastic
Impression Trays -
Feasibility study

Curriculum Integration:

Introduced *Sustainability*
through undergraduate
and staff activities

Impact & Outcomes



15 projects completed

Cost avoidance: £43k per annum

Cost savings: £1,670.50 per annum

Carbon reduction : 1,761 kg CO₂ per annum

SID Talks: 30 attendees, positive feedback

Sustainability introduced in undergraduate curriculum

Challenges



Administrative delays



Limited digital infrastructure for remote consultations



External dependencies (e.g. recycling schemes)



Enablers



Protected time in job plans



Strong senior leadership support



High engagement from students, staff and NHS trainees



Structured framework from the Bevan Commission



Key Conclusions

- Sustainability is now firmly on the map at the Dental Hospital and School
- Co-leadership and stakeholder engagement are critical
- Bevan Commission's WASTES typology
 - Effective framework
- Projects vary in impact:
 - But ALL will contribute to educational needs



Next Steps

Follow our Roadmap!



- **Learning and Teaching**
 - Expand educational integration
- **Clinical Practice**
 - Reduce SUP's
 - Promote staff upskilling
 - Improve patient attendance
- **Engagement**
 - Patients-External Comms
 - Sustain momentum; SID Talks, Projects
- **Sustainable Procurement**
 - Monitor the impact of the procurement 'hub' at UDH

Diolch am wrando
Thank you for listening

Sheelagh Rogers

Sheelagh.rogers@wales.nhs.uk

Nagham Katif

KatifN@cardiff.ac.uk

